



Our Mission Statement: *“To worship God and follow Christ, transforming our world in the power of the Spirit”*

Welcome to all visitors and newcomers worshipping with us today.
Would you like to know more about us? Check out our website www.hpcc.hornby.org.nz

16th May Worship Services

Hornby Presbyterian Community Church

Today

9am & 10.30am:
The Cross and the Christian

Sunday 23rd May

9am & 10.30am:
The Soul and the Cross

HPCC Evening Service's @ 5.45pm

Today

545: Kingdom Come -
It takes two

Sunday 23rd May

545 & edge:
Combined Presbytery
Youth Service

West Melton Presbyterian Community Church

Today

9.30am: What in the world are
Rob and Sandra up to?

Sunday 23rd May

9.30am:
Transformed! Acts 2:1-21

HPCC's Regular Prayer Meetings Are On:

6am – 7am: Tuesday

6am: Wednesday at West Melton

6am – 6.30am, 6.30am - 7am, 7.15am - 7.45am: Thursday
(You choose the time)

7pm: Saturday

Prayer Points

- Thanks for a successful garage sale.
- Prayer for school teachers in our congregations that they will know the Lord's help and be effective role models
- Pray for those who work in the health professions – that God would help them bring comfort, healing, and help them process the personal trauma's they encounter.
- Pray for Rob and Sandra – for the Lord's provision

Baptism Service: We are holding one on Sunday 6th June. If you are interested then please see Murray or notify the office.

545 Tonight: Jesus sent them out in pairs to minister in His Kingdom. What does it mean to **do life together** in the Kingdom? Am I good friend? How can I be a better friend?

Prayer Chain: If you would like to request prayer there are now two options to choose from:

BY PHONE OR TEXT Wendy
BY EMAIL Marilyn

Ministry Notices

Hospitality Revisioning:

Hospitality is a vital area in the life of our church and our outreach into the community. We would like to gather all those interested in talking about how we serve in this area.

If you have a heart and passion for hospitality at HPCC, bring your ideas, dreams and experiences, to share and discuss on Monday the 31st of May at HPCC, 7pm.

Please RSVP to Marya at the office by the 30th of May.

GIRLS GO!! *Equipping for a purpose*
HPCC WOMEN'S CONFERENCE, 25-26 JUNE 2010
Cost: \$30pp. Venue: HPCC
Registrations available next Sunday 23 May

Keynote speaker Tessa Dodge works for the Canterbury Youth Services as the New Zealand Strength-finders Coordinator. She is passionate about helping others discover their strengths and God's intentional design for them. Don't miss this opportunity to come along and be inspired, challenged and refreshed in the purposes God has for you!

FOR YOUR ENQUIRIES: THE HELP DESK WILL BE OPEN TODAY 10-10.30AM AND AFTER THE 10.30AM SERVICE.

THE DUTY ADMINISTRATOR TODAY IS MARYA

We would love some help with our Help Desk.

If you love to chat to people & help people then please let us know by filling in your name on the clipboard at the Help Desk.

Mission Leadership Team

Last weekend Murray mentioned in his morning message "Strengths Finder" – I thought that might be a new term to many that warrants some explanation.

For the last 70 years Gallup in America have been studying "What's right with people" i.e. their strengths and in particular how those impact leadership along with how they do life. Their thesis, developed from wide ranging research (20000 interviews with senior leaders and 10000 interviews with people all around the world who are led by others), is that people and organizations do best when:

"We discover what's right about people and build on that."

In other words when we understand how we're wired, understand our personal strengths and invest in / work to those we will feel more engaged, energized and fulfilled. Some of their findings on this are staggering e.g. in organizations that don't focus on employees strengths levels of engagement are typically around 9%, when the organization adopts a strengths focus this lifts to as high as 73%. Imagine the impact that could have on the organizations you are part of!

Think about the management and leadership focus where you work, serve etc. Is there a lot of focus and energy on weaknesses and correcting them or on people's strengths and how best to align those for the overall objectives?

God built each one of us uniquely and placed us in a particular place in the body (1 Cor 12:12). Strengths Finder has been a really helpful tool for us to understand particular dimensions of this. As a staff and leadership team we've each been through the program and it is beginning to now help us with a language to better deal with areas of tension or simply "difference" – they are no longer what's wrong with someone else, but often arising from the strengths we each have. We are also discovering that there is no well rounded individual - only well rounded teams, and what it means to "borrow" from each other's strengths. It can be very freeing.

So that's a wee intro, if you'd like to know more please contact me, or keep an eye out for an opportunity to participate in the Strength's coaching as they come along.

We seem to be in a wee period where people are off in several directions. As I write this, Murray & Janice are at the East Taieri Pastors conference with several from our team, while next week Darryl and another team of folk are off to Life Conference in Auckland. These are important opportunities to step back, get some wider perspective, experience input from fresh voices and for God to refresh and renew his leaders. Please pray for the teams as they are away.

Blessings
Michael



Children's Ministry

"Helping kids worship God, follow Christ and change our world"



Hornby:

**The Meek:
Strength under Control (Humility)**

9:00am

Crèche (under 4 yrs): In the Church Lounge.
Junior Early Birds (4-5 years of age): In the House.
Early Birds (Year 1 to Year 6): In the Reima Centre.

10.30am:

Crèche (under 4 yrs): In the Church Lounge.
Junior ROL (4-5 yrs of age): In the House.
ROL (Year 1 to Year 6): In the Reima Centre.

Playgroup: Join us at 9:30am on Tuesday for Messy Play Day. \$2 donation per family, morning tea and lots of fun provided ☺

Mainly Music: Is on Thursdays in the term time at 10:00am and 10:30am. Cost \$2 per family. Join us for music and morning tea. Contact Leanne for more information.

IFG: (ICONZ 4 Girlz): Mondays @ 6:30pm in Reima. If you'd like to know more call children's ministries.

Rugrats: A music and movement programme for preschoolers at West Melton Church – a bargain @ \$2 per family, Thursday from 9:30am, am tea provided.

For further info regarding Children's Ministry call 980 2296 ext 218 or email Rob Key on rob.key@hornby.org.nz



SURVIVOR SLEEPOVER

For children Yrs 3-6
Friday 21st May at 6.30pm
In the Reima Centre

Register now! Get your forms from EB or ROL today.



Ministry Notices

Help Dan! Dan needs help - if you can play a musical instrument, sing, or would like to learn to operate tech gear to help serve in small groups, satellite services, or Sunday worship at Hornby please see Dan, Tara t or Byron. Contacts in the directory or ask at reception.

Welcome Team: There is plenty of room on the roster for those who would like to join the welcome team. We need people at all three services and you can nominate at which service you would like to serve. If you would like to help or need more information then please contact Doreen at 980 2296 x223 or email doreen.hawkins@hornby.org.nz

Men's Breakfast: Kickstart is on Saturday 29th May. Join us at 7.30am in the church café.

Donor Rebate Receipts: These are available for you this Sunday.

MOPS: Is on this Wednesday 19th May in Rolleston at the Rolleston Community Centre from 10am. Cost is \$3.

Hornby Presbyterian Community Trust AGM
To be held on the 24th of May at 8pm
In the Church Lounge.

All are welcome to join us as we report on the past year and look to the year ahead.

West Melton.

This week I spent a very refreshing time at the South Island ministry conference at East Taieri Church, Mosgiel. Aside from the opportunity to get lost in worship, eat great food and meet old friends the key note speaker was very thought provoking for me. Paul Windsor, former principal of Carey Baptist College spoke on being distinctive with distinction, using Jesus, Paul, the writer of Ecclesiastes and Peter as examples.

In the case of Jesus he spoke of his 4 essential elements to his mission. The first 2 are a part of the character of Jesus; grace and truth (Jhn 1:14). We see his grace in the way he treated people - his healings and deliverances, his words to the woman caught in adultery – “neither do I condemn you, go and sin no more” or to the cripple lowered down through the roof - “your sins are forgiven”.

But there is another side to Jesus; he speaks the truth. He confronts falsehood and challenges the distortions of the Pharisees’ approach to God. He is not afraid to call them ‘whitewashed tombs’ and ‘hypocrites’. Paul Winsor suggests the problem for the church in NZ is we are too shy to challenge people with the truth at a time when this is needed.

The next 2 elements are things Jesus says; he tells us we are the salt of the earth and the light of the world (Mt 5:13-16). Salt is a preservative but for it to work it must be mixed in to the meat. This translates to our being involved in the world, exerting influence where we can, stopping the rot of a sinful and morally bankrupt world. But we are also to be light which dispels the darkness. We live by the light of the kingdom of God which cannot tolerate the darkness of Satan’s realm but exposes its wickedness and offers a better way.

So there exists a tension between grace and salt on the one hand which seek to be fully engaged in the world, comforting and helping people and expressing God’s love, while on the other hand is truth and light which challenges sin and iniquity in all its manifestations. Paul Windsor suggests the church needs to embrace all 4 elements of Christ’s mission - to be more gracey, salty, truthy and lighty.

Blessings,
Brent



Hospitality Rosters: Next Sunday
See handout for details

Financial

April (4 weeks)

YTD (Jan-Apr)

See handout for details

Thank you for your continued faithful giving. There are tax advantages in giving by either envelope or Automatic Payment. Please contact the office for more details.

If you know someone who is in hospital and would like a visit please contact Kathy or Margaret.

Sermons are now available for download from the publications section of the church website. Follow the link from www.hpcc.hornby.org.nz

YSWC



Youth Notices

Edge Next Week: We are combining with 545 and Christchurch Presbytery Youth. Come along and experience edge in a bigger venue and with a ton of young people from around the city.

Intermediates

Prayer for Intermediates: Sundays 10:20am till 10:26 and a half am in the Meeting Room (Come join us - Last week 6 showed up)

630 Fusion: Start saving pennies and this date — June 25th, our Ice Skating Event.

Church Library: Thank you for all the books & videos that have been donated. They are very much appreciated. Welcome to Merrin who has come on board as part of the Library Team, decreasing the workload & bringing fresh ideas.

Over the next few weeks phone calls will be made reminding people of overdue items. Please don't be offended if we get it wrong & items have been returned. We ask that you check out book shelves at home for any outstanding items. There are now instructions on the wall and by the issuing book. Please read these to help us run this library more effectively.

For comments, enquires & suggestions contact Catherine or Merrin.

General Information

Football Great WYNTON RUFER Live in Halswell: Today. See the noticeboard for more information.

Aidanfield Christian School Enrolments for 2011: Enrolments for 2011 close on May 21 for pupils entering year 7, 8, 9 and 10 next year. For pupils looking for a place in years 1 to 6 the closing date is August 20. Application forms and a prospectus are available on our website. At this stage I am looking to start a second year 7 and 8 class so there will be places for approximately 12 new Year 7 and 8 pupils. We also have approximately 25 places at year 1 available and limited places at most other levels for 2011. Please visit our website for more details: www.aidanfield.school.nz

Laidlaw College Christchurch Campus Info Night: 7:30pm Monday 24 May, 70 Condell Avenue, Papanui.

- Meet our experienced academic staff
- Learn about our flexible learning options and quality NZQA accredited programmes
- Discover if Laidlaw College is right for you

For more information phone 354 4270, visit www.laidlaw.ac.nz or see the noticeboard & pamphlets.

Lawn Mowing Roster: Amyes Road

22 May – David

29 May – Grant

Welcome Team – Duty team for 23rd May is:
See handout for details

Newsletter Publishing Information

Deadlines for the church newsletter and powerpoint notices:
Thursday 12pm
Newsletter's are now available from our website from:
Friday 3pm

All meeting are at HPCC 27 Amyes Road unless specified

What's on this week

<p>Sunday 16/5 <i>Hornby*</i></p> <p>9am: Family Service</p> <p>10:30am: Family Service</p> <p>5:45pm: 545 Service</p> <p>West Melton</p> <p>9.30am: Family Service</p> <p>Rolleston</p> <p>9.30am: Living Word Children's Church</p>	<p>Monday 17/5 <i>Hornby*</i></p> <p>12.45pm MOTO</p> <p>2.45pm: CATS</p> <p>6:30pm: IFG</p> <p>West Melton</p> <p>6pm: Alpha</p>	<p>Tuesday 18/5 <i>Hornby*</i></p> <p>6am: Prayer Meeting</p> <p>9:30am: Playgroup</p> <p>1pm: Hei Hei Prayer Group at Maori Welfare League Rooms in Hei Hei</p> <p>7pm: Represent</p>	<p>Wednesday 19/5 <i>Hornby*</i></p> <p>9am: Bible in Schools Templeton</p> <p>9:30am: Women to Women</p> <p>10am: Midweek Service</p> <p>West Melton</p> <p>6am: Prayer meeting</p> <p>Rolleston</p> <p>10am MOPS</p>
<p>Thursday 20/5 <i>Hornby*</i></p> <p>6am-8am: Prayer Meeting</p> <p>9am: Walking Group Carpool from Church Carpark</p> <p>10am: Mainly Music</p> <p>10:30am: Mainly Music</p> <p>6.30pm: Lime</p> <p>6.30pm: ICONZ</p> <p>West Melton</p> <p>9:30am: Rugrats Music Programme</p>	<p>Friday 21/5 <i>Hornby*</i></p> <p>9am: Bible in Schools Gilberthorpe</p> <p>6.30pm Energisers</p> <p>6.30pm Children's Survivor Sleepover</p> <p>West Melton</p> <p>7pm: Ramp Famine Sleepover</p> <p>Rolleston</p> <p>7.30pm Awhero 8</p>	<p>Saturday 22/5 <i>Hornby*</i></p> <p>Children's Survivor Sleepover</p> <p>9am Kairos Course</p>	<p>Sunday 23/5 <i>Hornby*</i></p> <p>9am: Family Service</p> <p>10:30am: Family Service</p> <p>5.45pm: Edge & 545 Combined Service with Presbytery Youth</p> <p>West Melton</p> <p>9:30am: Family Service</p> <p>Rolleston</p> <p>9.30am: Living Word Children's Church</p>

Bible in Schools

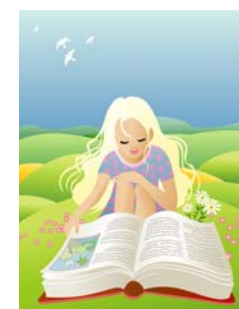
Bible in Schools teams go into the local state primary schools once a week for a half hour lesson in each classroom. The three schools we teach in are South Hornby, Gilberthorpe & Templeton. Our volunteers work from a teachers manual which has twenty lessons in it. From those twenty each volunteer teacher picks approximately fifteen lessons to match with the school term dates. The children have a workbook with activities that corresponds with the teacher's lesson. At the start of each term we have an assembly taken by Open Air & Church Ministries (Open Air Campaigners) with Marty and Roy.

A typical lesson for Year 4-6 (8-10 year olds) might be like the following:

- Way In – Poster with the word compassion on it. Discuss what compassion is. Maybe give a dictionary meaning. Give each child a pipe cleaner & a half pipe cleaner. Show them how to make a person. Give them a tissue for a mat. This is the crippled man at the pool.
- Story – Read from manual about Jesus healing the crippled man. Discussion about Jesus healing on the Sabbath. Love versus rules of Jewish leaders. Read appropriate Bible readings.
- Connections – Questions as in teachers manual. An example of love in action in the school playground or at home.
- Workbook – Children complete part or all of a page depending on the time left.
- Optional Extra – A song.
- Prayer – Finish with a short prayer from the manual or your own prayer for the lesson.
- Finish by saying goodbye to the children and thank the class teacher.
- Leave class having once more "sown seeds" for God.

Note: discipline as usual was no problem because the class teacher was there for the half hour.

Blessings, Dulcie



STAFF TEAM

Hornby

Senior Pastors: Murray & Janice Talbot – email - murray.talbot@hornby.org.nz “Change Ministries”
Assistant Pastors: Michael & Vivia Schwass - email - michael.schwass@hornby.org.nz “Coach Ministries”
Assistant Pastors: Darryl & Michele Tempero - email – darryl.tempero@hornby.org.nz “Call Ministries”
Children's Ministries: Rob Key – email – rob.key@hornby.org.nz
Parish Manager: Steve Talbot - email – stephen.talbot@hornby.org.nz
Youth Ministries: Rachel Bacon – email – rachel.bacon@hornby.org.nz
Pastoral Assistant: Doreen Hawkins – email – doreen.hawkins@hornby.org.nz
Administration: Sharon Spragg or Marya McKee – email – admin@hornby.org.nz

West Melton / Halkett

Pastors: Brent & Catherine Richardson – email - brent.richardson@hornby.org.nz